



PORTFOLIO

DEKORASI
HUNIAN
INDONESIA



GREETINGS TO THE DREAMERS

Dekorasi Hunian Indonesia has been accommodating people's need in design and build for office, commercial area and residential, both apartments and landed house for 7 years since 2010. We prioritize our client's vision, need and preferences to ensure that their characteristics represented well in the project.

We do our job with our best to actualize the concept precisely by starting from idea conception, space & layout planning, furniture & material selection, construction of the interior fit-out, and also styling for the finishing details. We give attention even to the smallest details such as utensils, accessories, decorations, etc.

Realizing client's dream of an ideal home is our main motivation. Our capabilities of interpreting client's vision alongside with our excellence from the concept until the tiniest detail production, make us the perfect partner for your interior design solution.

CONCEPT 3D



ACTUAL PHOTO



STRIVING TO DELIVER WITH PRECISION

It is our core spirit in every projects we have handled, and sure do for every projects that will come. Seeing the client's smile and excitement with our own eyes is the true achievement for us and will be always our goals. That is why we always aim for great concept with meticulous production.

Hermawan was graduated from the University of Surabaya majoring in Management & Industrial Engineering. He started his career by holding key positions at multinational oil and gas companies in Indonesia and Singapore.

Although his past career was not from interior industry,

Hermawan is gifted with natural talent and enormous passion to create a home that represents the owner's character with an excellent interior design.

His strong business skill and management knowledge that he got from spending 15 years in multinational companies make him a true visionary, who brings good design, service, and project management in DHI.

HERMAWAN KHO

Founder



Before joining his business partner Hermawan Kho in DHI, Joy had over 10 years of experience in various industries, including IT Company, and Oil & Gas Company. With his never-ending spirit, Joy found his real passion in the interior design industry, and passionately developed a great taste in interior design which is his truly passion & talent.

His wide-ranging experience and knowledge from his previous career are beneficial for DHI to deliver professional and high-quality service to its clients.

JOY TUA

Co-Founder



DEKORASI HUNIAN INDONESIA WAS ESTABLISHED IN 2010

and have been striving to deliver the best by combining natural talent, big passion and solid knowledge of its founder. With their consistency on keeping great performance, they have successfully created 30 Residences, 25 Offices, and 9 Commercial Areas with a total of 32 Design and Build, 32 Concept Design projects, and will always increase.

CONTENT

RESIDENTIAL

Luxurious To The Finest Details	10
Glamorous In Every Step	22
Luxurious Masculine Residence	28
Living the Open Plan Apartment	34
Smart Design for Limited Space	39
City Place for Weekend Getaway	42

OFFICE

Modern Open Space Office	50
Smart Change for Fresher Look	57
Colorful Modern Office	62
Warm and Open Space Office	66
Compact and Efficient	72
Modern and Colorful Workspace	76

COMMERCIAL

The Balance of Modern and Traditional	83
Two Different Excitement	88
Fresh Start for a New Company	92
Unique Contemporary Dining	97
Efficiently Beautiful	100
Little Cute Icons	104



RESIDENTIAL

In residential interior design, interpreting client's need, character, and vision is our main concern. But also we are not leaving aesthetics, function, and room flow to make it perfect. Through direct discussion with the client, we try to solve their problems thoroughly. Furthermore, we actualize the concept to the smallest details to make every project expressive.

LUXURIOUS TO THE TINIEST DETAILS

A modern-classic design is the main element in this home, according to the kind of character that the homeowner loves. Elegant element also provides modern-classic impression in each room which makes every room look impressively luxurious.

In the living room, the modern-classic impression expressed by a wall that covered with rectangular dull satin mixed with mirrors that become the focal point of the whole room. The enormous windows also encourage the luxury and become an important part of good airflow and sunlight supply.

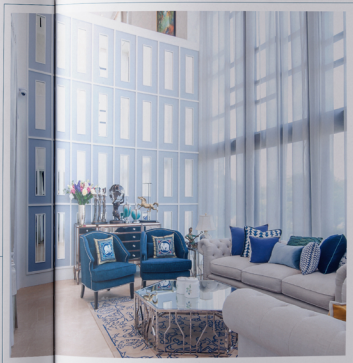
High-end furniture that we bought in Jakarta and Bali are arranged in such way to maximize the modern-classic style impression.

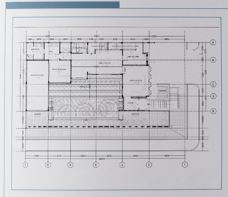
Luxurious hexagonal coffee table becomes a centerpiece and balanced out by the classic blue and white fabric sofa.

Some additional things like classic sculptures and cushions also add even more aesthetic value to the living room.

Lancewood Navapark, BSD

Land 476 sqm | Building 476 sqm
Design & Build
April - December 2017





We pay attention carefully to every little detail to keep the modern-classic style featured on every corner of the house. A classic blue chair is placed above round modern rug on the corner of the alley to add some vibrant accent to the whole room, altogether with mirror cabinet and some vases on it.

From the first entrance to every side of the house, we manage to represent the modern classic style all the way. Even though every room have their own function, but each designed well so we can feel the unity of the concept of the house.



In the dining room the dining table represents the main style. Also, chandelier on the ceiling obviously gives luxury to the room by its light-reflecting crystals. The baby grand piano and piece of artwork on the corner embrace the high-end classic side of the room.



Lancewood Navapark, BSD

Land 476 sqm | Building 476 sqm

Design & Build

April - December 2017



Pool area with modern surrounding is located right next to the dining room, giving a nice relaxing view while dining. We installed wooden flooring on the terrace to represent modern style on the outdoor part of the house. White and bright dining table also placed on the poolside, with the wooden standing lights on the corner to give some accent to the plain wall.

In the karaoke room, the walls are mostly covered with a geometrical pattern that adds another modern accent to it. We installed a mini bar that facing directly to the window so that anyone can enjoy the drink with a view.



We design the 2nd floor master bedroom in such way to make a harmony between comfort and luxury. Modern velvety brown walls behind the king size mattress and mirror bedside tables became the focal point in the bedroom, whilst small pieces of accessories like frame give classic accent to it.



The luxury of the bedroom continues as we walk into the classic walk-in closet with white as its dominant color. Another chandelier on the ceiling lights the shiny white marble floorings and the whole closet elegantly.





GLAMOROUS IN EVERY STEP

The homeowner loves luxury and glam so that much she desired her house interior to be designed into that kind of style. She wants to surprise and impress her guest from one room to another with modern interior and lots of ornaments.

The living room is covered in a multiple tone of rose gold color on the floorings, rug, and walls. 2 pieces of artworks placed on two sides of the room as luxurious decoration alongside with the mirrors installed on the wall panel. The color that dominated the whole room also a warm feeling as we walk in.



Lancewood Navapark, BSD

Land 220 sqm | Building 257 sqm
Design & Build
December 2016 - On Progress



Luxurious vibes are always present in each room of the house. We chose trendy pieces of furniture followed by different wallpaper with an elegant pattern that successfully brought out a surprisingly dynamic sensation every time we enter the room.



Decorated by the sparks of mirror panel covered walls and also the bedside mirror table, the bedroom looks very slick and modern. Geometric pattern rug beneath the bed makes it an eye-catching center of the room.

In the kid's bedroom, the atmosphere is slightly different. It gives a warm and modern ambience with minimalist furniture and bright color scheme all over the room. Some quotes are written on the walls of the single bed makes it the most stand out part of the room.

Also some illustrations of the kid's favorite cartoon character on every side of the room.



The homeowner used to live overseas. He likes a masculine and glamorous concept and wants it to be applied to his apartment. We use dark colors such as brown and black to enhance the masculine style, then combined with light golden brown to balance it out. He loves bull so much so that we put an eye-catching bull shaped wall decoration on the wall.

LUXURIOUS MASCULINE RESIDENCE

Season City Apartment,
West Jakarta

70-46 sqm | Design Only
1 Month Design



We installed a large golden geometric shaped mirror panel on the wall behind Television to bring out the glamorous style. Equipped with unique hanging-lamps and a bright rug that add more dynamic to the room. An industrial kind of shelf is placed near the window for storing some liquor as one of the owner's hobbies and add even more masculine aspect to the room.

The owner meant to invite his parents to live with him in the apartment. Therefore, some rooms in the apartment are more neutral and not too overpowered by masculine and glamorous style, but still enhancing the modern side. In the dining room for the example, as a place that would be used with another family member, we chose some brown and white colored furniture to make the ambience warm and clean.



The parents' bedroom color scheme are more neutral and a bit brighter than other room. Some minimalist furniture such as simple shelf, mirror and bedside table are arranged in such ways to achieve a great room flow and functionality. The main bedroom is designed with statuario color in white that dominates the whole room to gives a broader, simple and clean impression. Also, simple and minimalist furniture is used in the rooms.



The men's bedroom certainly designed to show his character. Dark color plays a great role in giving masculine style, mixed with gold color for glamorous accent. Wooden footings add coziness while also give a sense of glamor. Wooden and steel are chosen to be the material for the single closet in the room.



For the glamorous style, we installed a mirror behind the bed. Then, on the corner of the room, we also put several gold sculptures to glam up the decoration itself. The golden beige curtain used to balance the gold color.



**Season City Apartment,
West Jakarta**

42 sqm | Design and Build
May - July 2019

LIVING THE OPEN PLAN APARTMENT

This 42 sqm apartment in 33rd floor of Season City Apartment is our first ever portfolio. Our founder is the owner of this unit.

He fancies minimalist and clean style. We transformed the unit into an open-plan layout and applied white as the main color scheme to give it a spacious feel. It has 2 bedrooms before but felt so cramped up with gypsums that separate each room, leaving a tiny space for kitchen, toilet, and living room.



After being redesigned into four equally large areas with left style, the unit has become more spacious with bedroom, kitchen, living room and toilet connected to each other openly. White gives a bright and clean color to the unit. Furthermore, it is the owner's favorite color. The unit is dominated by white color on the furniture and touch of some stainless and glass to add a nice vibrant to the entire design.

The living room design was inspired by a Hollywood movie 'Transporter' so the owner decided to arrange gray velvet stones evenly and later use to support the television bracket with a white simple cabinet underneath the television to put on other entertainment devices. He arranged a leather couch facing the television so he can spend some time watching movies comfortably.





SMART DESIGN FOR LIMITED SPACE

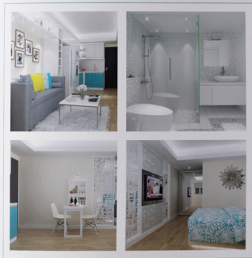
Understanding the client's needs and character to interpret both aspects into an excellent interior design is an ability every interior designer must capable of. The owner of this apartment is a woman that wants her place not too girly, she wants it to be masculine instead. That is the main challenge for us to create a design that prioritizes masculine and modern style but still suits the owner who's a woman.

We use blue and gray color as the main color scheme that gives a bit of masculine style but not too dominating. White color tonality in this apartment so it gives the room a brighter and broader impression. The bedroom and living room separator is designed with semi-transparent separator with abstract line pattern that adds a touch of aesthetic value to both of the rooms.

With only limited space available, we provide many multifunction solutions to fulfill the owner needs. Television bracket is installed on the room separator, it can rotate 180 degrees to each side of the room so she can watch TV in any room. Even more astonishing, the paint on the wall is expandable as a dining table for 2 person with smooth hinge that gives the owner one of a kind experience every time she opens it.

The Wave Apartment, South Jakarta

33 sqm | Design & Build
June - October 2024





Green Pramuka Apartment,
Central Jakarta

34.5 sqm | Design & Build
November - February 2015

COZY PLACE FOR WEEKEND GETAWAY

The owner is a mother of one daughter who expects her apartment to be the destination for weekend and holiday getaway. She asked us to redesign the whole apartment with a touch of feminine sense with the honey, roomy and beautiful atmosphere.



The whole apartment uses red and white color. But not with her daughter's room is dominated by a more girly color combination of greenish yellow with a gold-brown accent. The whole design is more for a long term so it doesn't use a lot of bright colors that identical with kid's room.



On the other rooms like bedroom and bathroom, we prefer to use red color as the one that dominates the overall color. In the bedroom, 2 different floral pattern wallpaper is used to add a few feminine feels since she is going to be the one who spends most of her time there. While in the bathroom, the wall is half white, pink, and red mosaic tiles and half covered with mirrors to give a spacious impression.



We chose red and white tonality which are the owner's personal favorite. To give a broad impression of the space we use almost white on everything like floorings, walls, kitchen cabinet and paint on the wall. To separate the pantry and dining area with the living room without making it looks cramped, laser cut wood is used as the separator with living accent that makes it semi-transparent.



OFFICE

When it comes to designing office interior, we are doing it as efficiently as possible. Within the available space and time, we provide various departments need which are different from each other. The design we make is always based on the current trend but keeping our characters in it. With a limited amount of work time, we make sure that our work still emphasizes the quality.





**PT. Marunda Grahamineral,
Central Jakarta**

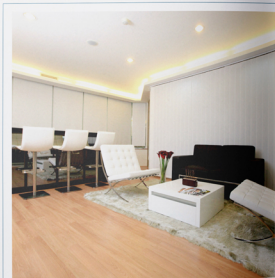
Building 990 sqm | Design & Build
January - November 2003

**MODERN OPEN
SPACE OFFICE**

To revamp the office, D&H Interior applies modern interior concept into the space, bringing fresh and professional look of the company. For some areas, D&H Interior also inject warmer and more refine mood to the office, specially the management floor and the public area.



For the manager and staff floor, D&H applies a modern, open interior concept. The staff seating arrangement are not separated by high level cubicle, but using workstations with integrated low panel incorporating the corporate color of green and blue. Open interior concept giving broader visibility throughout the floor and making the space impression larger.



D&H have the privilege to design the entire 4-floor company. The 1st floor designed with modern and warm tone for receptionist, waiting area and a meeting room. The 2nd floor is designed homier and more private but still with modern design for the board of director and senior management. And for the 3rd and 4th floor, we design the workstation for staff and manager differently with modern and open space concept.



SMART CHANGE FOR FRESHER LOOK

APL, a pharmacy company bought the office space from the former tenant, an oil and gas company. For a company, they have to manage their spending well, therefore they intend to keep the existing space and furniture but also need to get a new look for the office. That's where D&H is needed to rejuvenate the office smartly.

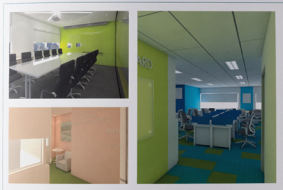
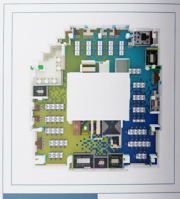
**PT. Anugerah
Pharmindo Lestari,
Central Jakarta**

10th floor 1038 sqm | Design & Build
April - June 2016
10th floor 1038 sqm | Design Only
2 week

Still using the same reception table, we bring a new look by building a led lit backdrop with stripes accent above the blue wall to place their logo and be the main focus of the room. The wall sticker with Indonesia map design strengthen the credibility of the company and adding aesthetic value to the plain wall.



For the staff area, we add a blue color to the cabinets to make stripes accent so the plain white office becomes more dynamic but still within the corporate's color. A simple solution to make the gray monotone room more lively. For the party area, we use industrial theme interior with industrial hanging lamp and unique wooden-steel stools and balanced with artificial plants to bring a fresher mood.



API, which cooperate with ZUELLIG PHARMA and for this 11th floor, they plan to design it with ZUELLIG PHARMA corporate color which is green and blue. In this concept design, we bring the modern and dynamic concept through the custom colored carpet, walls, and workstations bringing the corporate look throughout the entire office. The workstations area applying the open space office concept so the room feels big and comfortable.

COLORFUL MODERN OFFICE

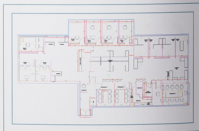
This project is to redesign the marketing office of PT Perfetti Van Melle and make it fun and colorful, as a true reflection of their candy products. The client requests D&H Interior to divide the office into a lobby/reception area, an open space staff area, 1 main meeting room.

2 small connected meeting rooms that can merge into a medium meeting room, 7 office rooms for the directors, a server room, a storage/filing room and a pantry. The main challenge comes from the client's wish to use as much as possible of their existing furniture, which resulted in the lengthening of the renovation time due to having to move the furniture here and there during the renovating.

PT. Perfetti Van Melle Indonesia, South Jakarta

285 sqm | Design & Build
November 2013 - January 2014





The reception area greets a visitor with a rainbow of color next to the reception desk, representing the colors of Mexico Rainbow. We attach the company logo with backlit led to the Rembrandt coral decorative wall behind the receptionist chair. On the other hand, the meeting room and staff area are predominantly white to give spacious, impressive and balanced with wooden furniture to give elegant look.



WARM AND OPEN SPACE OFFICE

PT. Imeco, Central Jakarta

1000 sqm | Design Only
1 Month Design

IMECO Office is a distributor company for General Electronic. The owner wanted the office to have spacious feel by using up-to-date open space design. We made a concept design that gives warm simple modern feel by using wood as the major materials for the walls and floorings. The color scheme is mostly in the light color to preserve the open spacious design.



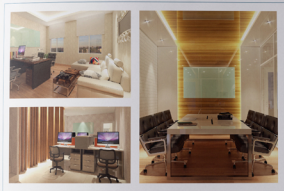
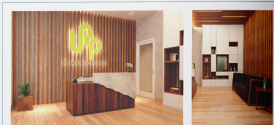


In the lobby of the office, the eye-catching centerpiece is the reception table with bright abstract light where mostly it is the first thing to see if one enter the office. Then on the work-space, the cubicles and carpet are grey to keep it looks simply nice. Lighter color such as white and yellowish-brown are applied on the breakout area so it gives relaxing and more coming sense than the other room in the office.

COMPACT AND EFFICIENT

PT. Indo Riau Perkasa,
Tangerang

112 sqm | Design Only
1 Month Design



PT. Indo Riau Perkasa is a vendor for oil and gas company that has a small office space. In 3 story building, they wanted to maximize the usage of every space available with a modern feel. We made a modern concept design with wood as the material that gives powerful modern yet warm mood to the office.



Beside wood brown, we also use warm tan color to make a vibrant color combination in each room. In the meeting room, we installed a warm-toned bright light alongside the wall to the ceiling to add an obvious modern accent. On the other side, the wall is made of white bricks that show the texture of it. Meanwhile, in the director room, the mood is warmer with tan colored wallpaper covering all over the walls, to give a nice touch on the wall we hang a decorative mirror above the comfy L-shaped sofa.





MODERN AND COLORFUL WORKSPACE

PT Sree Internasional Indonesia is a company in chemical trading industry located in the heart of Jakarta business district. Given a color guideline and also some Indian feng shui from the owner, D&H Interior challenged to create a modern, dynamic open space office area. The staff area designed with low separator workstations incorporating the yellow corporate color, and also red and yellow pouffe on an artificial grass carpet to add dynamic and freshness to the room. For the meeting area, we make it modern and classic with unique hanging lamp and indirect lighting at the ceiling to make it more stylish.



PT. Sree International Indonesia, South Jakarta

650 sqm | Concept Design
Design Progress 1 Month



The director's room designed with modern and classic interior style with monotone furniture color. A huge classic cabinet behind the director desk making a statement of the domination in the room. Moving to the other part of the office, white color still the predominant to give a bright and spacey feeling, and also we bring more freshness mood by using stone tile decoration on the wall alongside with potted plants that arranged to be a separator.



COMMERCIAL

In commercial area interior design, the main concern is the purpose or the function of the company. Based on the consultation with the client about their vision and needs, we also adjust our design to fit into the target segment needs too. We work efficiently in designing for commercial so that we can fulfil our client needs according to their timeline.

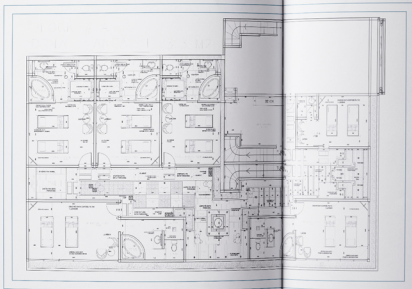


THE BALANCE OF MODERN AND TRADITIONAL

Khayoe Spa is Located in one of the best tourist attractions in Bali, Garuda Wisnu Kencana Area. This spa and body treatment facility is actually 3 floors small commercial building with the total of 956m² interior space. Khayoe spa practices natural ingredients and traditional techniques to represent the exotic and authentic Bali Spa. Even though the spa has a strong traditional characteristic, the owner wants the concept to be balanced also with modern style to make it more elegant and premium.

Khayoe Spa, Bali

Building 956 sqm | Design & Build
March 2015 - December 2015



The name "Khayir" (wood) also become the main inspiration for the interior design concept, a wood element always present in every room of the spa. Wood brings natural and warm feels to enhance customer experience. At the lobby, wood ceiling dominating the room with stripped modern design, and cozy is the center there is a raw wood decor with hanging modern lamp illuminating the room with warm color.

The traditional feel of wood balanced well with selected modern designed furniture and marble floor, enhancing the ambience to be more premium and luxurious. A bit touch of Balinese culture sweetly topped the room with batik cushion and stone carving decor.

Playing with a wood element and stone carving making Balinese culture appear in every room in the spa. From the entrance, we greeted with the wooden gate with a pair of traditional Balinese statue. At some area, Balinese stone carving dominating on the wall whilst balance out with the wooden one.



Having a modern traditional concept, we also keep the premium feels. Gold mosaic tile wall at the toilet, spark a glam in a surprising place. While soft gray modern tile giving a clean, neat and elegant look at the Jacuzzi area.





On The Rocks, Lippo Cikarang

Building 306 sign (Design & Build)
January 2016 – March 2016



TWO DIFFERENT EXCITEMENT

The establishment is cubical in shape, a reflection of parts of its name, "the rock" or ice cube. Thus, D&H Interior works on the façade to be able to reflect that sense of cool. Having a restaurant on the 1st floor and a lounge on the 2nd floor, we apply a different mood for each but still keeping the neat and modern look. Garnished with different light play, we still can feel the modern and luxury relation between the restaurant and the lounge.

Located on the 1st floor, the casual-dining restaurant is a renovation of what was previously a seafood restaurant. D&H Interior applies the open space concept and maximize the seating capacity.

Based with white color giving a bright and neat look for the room, combined with the freshness of green and warmth of the wood element making the restaurant well balanced and fit nicely with their casual dining theme.



On the 2nd floor we play with darker color but still playing contrast with white modern furniture to add dynamic to it. The RGB LEDs around the room that can change colors, amplify the exquisite display that brings unique experience. We make the focal point of the room to really stand-out in black and white glass-tone, handsomely displaying the name of the establishment.



FRESH START FOR A NEW COMPANY

DFSK Showroom concept design is modern, simple, and must incorporate the company's color to all of the 2-story showrooms. The Company's colors summed up in the back panel behind the receptionist table, greetings the customer with the dynamic of its color. Clean and modern furnishings enhance the professional look of the showroom.



DFSK Showroom & Office, South Jakarta

Building 1495 sqm | Concept Design
Design Progress 2 Month

On the first floor, the showroom which is the main attraction are designed with two different color floorings to create luxury combination, beneath the cars we use wooden parquet while the rest are tile mosaic floorings. Clean and bright color throughout the showroom giving neat and cool feelings.



The modern furnishings fit well with the dual tone environment making the space comfortable. Company's vibrant color accent used to be the sign of some meeting area adding surprising accent within the area.





UNIQUE CONTEMPORARY DINING

Palm Resto is a Chinese food restaurant. The owner wants the interior to be identical to Chinese culture but still look modern, so we decided to make a concept design that more into contemporary Chinese. We use one kind of dining table that has 2 oriental ornaments, which is the pattern on the surface of the table and the steel on the side of the table. For the chair, we just put some simple wooden chairs on the table because the table itself has already represent the Chinese accent.

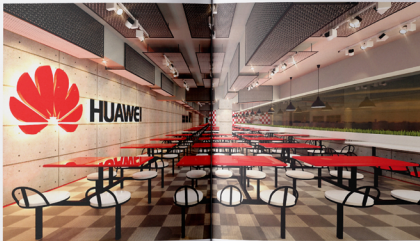
Palm Resto
Apartment Season City,
West Jakarta

Building 200 sqm | Design & Build
August 2015 - October 2015

The floorings are white shiny large tiles so that it even out the dining tables to be more appealing. Some walls are covered in wallpaper with another Chinese kind of pattern and we hung some simple artwork to add a bit of decorative accent to it. For the details, we put red napkins on each dining tables because red is a color that very identical to Chinese culture.



EFFICIENTLY BEAUTIFUL

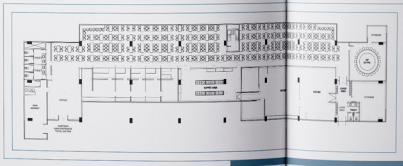


D&H made a concept design for Huawei Canteen Area with industrial kind of style. Still incorporates the company color, the chairs and tables are in red and white color. The checkered flooring and some part of the walls give a diner-like impression to the canteen. Equipped with a mostly gray color we want to keep the simplicity and industrial feel represented. On the ceiling, some steel meshes are installed to cover up the block.

Huawei Canteen, Central Jakarta

Building 1428 sign | Design Only
1 Month Design

There's also kitchen area on the canteen with its appliances arranged in such way to keep the flow work at it best while the kitchen is busy preparing meal for their customers. Warm ceramic tile is chosen to balance the gray industrial walls that surround the kitchen.



The space for locker area provides several steel lockers with the company color scheme, it still has the same checkered floorings as on the dining area, while other parts remain in monochrome color so it helps to pop the red and white color more.

LITTLE CUTE ICONS

Little Icons photobooth was our first even commercial project, located in Artha Gading. Little Icon is a photo booth service provider that has several franchises built around the town. Because it only provides a photo booth, it has a very small space that indeed has a photo booth in it. Beside photo booth, some other furniture such as table, stool, and shelves are needed for this business to service their customers.



Little Icon Photobooth Mall Artha Gading, West Jakarta

24 April | Design & Build
1 Month



This company has already made a guideline for the interior design so we must stick to it, but not put aside our characteristic in every project. Dark color wood is used for the furniture, then to make a nice contrast we use plain white walls to hang some pictures on it and light colored wood parquet as the floorings.

WE'RE PUBLISHED ON

SMART DESIGN Magazine

June 2012
6 pages main article



RESIDENCE INDONESIA Magazine

15 November 2012
For 8 pages main article



ASRI Magazine

February 2016
4 pages main article



RESIDENCE INDONESIA Magazine

Edition 46/1/2015
8 pages main article



TRANS TV THE PROJECT HOME & DECOR

Inspirasi Human Modern Klasik Trans TV
Edition 24/12/2017



RESIDENCE INDONESIA Magazine

Edition 15/2012
For main cover and 8 pages main article



SMART DESIGN Magazine

Mei 2014
5 pages main article



RENOVASI Magazine

Vol. 35/10/Maret 2012
For 8 pages main article



RESIDENCE Magazine

Vol. 43/16/Maret 2014
6 pages main article



Being published in national magazine and media are not our accomplishment. It is a nice compliment and critic of our work that will always be our motivation to be better in every project. Striving to deliver the best concept and the most precision build will always be our strength.

CONTACT

PT Dekonasi Hunian Indonesia

Green Lake City
Rukan CSD Block K No. 15 - 16 Kartasapang
Cipondoh - Tangerang - Indonesia 15147

Contact Person
Office | 0220 2252 6790
Hartawan Kila | +62 89 912 7275
Ary Sul | +62 81 860 7276

hello@dh.id
www.dhi.id



@dekonasihunianindonesia



